

SUBMINIATURE PULSE TRANSFORMERS

1. Surface-mount and Plug-in construction.
2. Smallest possible size.
3. Units manufactured to MIL-T-21038 TP75SXNNNNK2.
4. Dielectric Strength: All units tested at 500VRMS.
5. Insulation Resistance: Greater than 10,000 megohms at 700VDC.
6. Operating Temperature: -55°C to +130° .
7. Terminals: 0.075" x 0.006" (lead dia 0.020" for Plug-in)
8. Thermal Shock: 25cycles, MIL-STD-202E, Test Method 107C, Condition A-1.



Electrical Characteristics:

5T6174-XXX	E.T RATING (V x uSEC)	PRIMARY INDUCTANCE (uH)	TURNS RATIO	WINDING RESISTANCE (OHM)		LEAKAGE INDUCTANCE (uH)	I _{ex} (PEAK) AT RATED E.T	CONFIGURATION
				N1	N2			
001	10	150	1:1	0.06	0.06	0.12	70	A
002	10	150	2:1	0.06	0.03	0.15	70	A
003	10	150	3:1	0.06	0.02	0.18	70	A
004	10	150	4:1	0.06	0.02	0.22	70	A
005	20	600	1:1	0.24	0.24	0.48	35	A
006	20	600	2:1	0.24	0.12	0.58	35	A
007	20	600	3:1	0.24	0.08	0.70	35	A
008	20	600	4:1	0.24	0.06	0.84	35	A
009	25	200	1:1	0.06	0.06	0.12	80	B
010	25	200	2:1	0.06	0.03	0.15	80	B
011	25	200	3:1	0.06	0.02	0.18	80	B
012	25	200	4:1	0.06	0.015	0.22	80	B
013	30	1300	1:1	0.50	0.52	1.00	25	B
014	30	1300	2:1	0.52	0.26	1.20	25	A
015	30	1300	3:1	0.52	0.17	1.45	25	A
016	30	1300	4:1	0.52	0.13	1.75	25	A
017	40	500	1:1	0.075	0.075	0.25	80	C
018	40	500	2:1	0.075	0.025	0.32	80	C
019	40	500	3:1	0.075	0.012	0.40	80	C
020	40	500	4:1	0.075	0.010	0.50	80	C
021	40	2200	1:1	0.90	0.90	1.75	20	A
022	40	2200	2:1	0.90	0.45	2.10	20	A
023	40	2200	3:1	0.90	0.30	2.50	20	A
024	40	2200	4:1	0.90	0.22	3.00	20	A
025	50	800	1:1	0.24	0.24	0.48	40	B
026	50	800	2:1	0.24	0.12	0.58	40	B
027	50	800	3:1	0.24	0.08	0.70	40	B
028	50	800	4:1	0.24	0.06	0.84	40	B
029	50	3500	1:1	1.40	1.40	2.80	15	A
030	50	3500	2:1	1.40	0.70	3.30	15	A
031	50	3500	3:1	1.40	0.47	4.00	15	A
032	50	3500	4:1	1.40	0.35	4.70	15	A
033	56	1000	1:1	0.150	0.150	0.50	56	C
034	56	1000	2:1	0.150	0.050	0.64	56	C
035	56	1000	3:1	0.150	0.024	0.80	56	C
036	56	1000	4:1	0.150	0.020	1.00	56	C
037	75	1700	1:1	0.52	0.52	1.00	30	B
038	75	1700	2:1	0.52	0.26	1.20	30	B
039	75	1700	3:1	0.52	0.17	1.45	30	B
040	75	1700	4:1	0.52	0.13	1.75	30	B
041	80	2000	1:1	0.300	0.300	1.00	40	C
042	80	2000	2:1	0.300	0.100	1.30	40	C
043	80	2000	3:1	0.300	0.050	1.60	40	C
044	80	2000	4:1	0.300	0.040	2.00	40	C
045	100	3000	1:1	0.90	0.90	1.75	22	B
046	100	3000	2:1	0.90	0.45	2.10	22	B
047	100	3000	3:1	0.90	0.30	2.50	22	B
048	100	3000	4:1	0.90	0.22	3.00	22	B
049	112	4000	1:1	0.600	0.600	2.00	28	C
050	112	4000	2:1	0.600	0.200	2.60	28	C
051	112	4000	3:1	0.600	0.100	3.20	28	C
052	112	4000	4:1	0.600	0.800	4.00	28	C
053	125	4500	1:1	1.40	1.40	2.80	18	B
054	125	4500	2:1	1.40	0.70	3.30	18	B
055	125	4500	3:1	1.40	0.45	4.00	18	B
056	125	4500	4:1	1.40	0.35	4.70	18	B
057	160	8000	1:1	1.200	1.200	4.00	20	C
058	160	8000	2:1	1.200	0.400	5.20	20	C
059	160	8000	3:1	1.200	0.200	6.40	20	C
060	160	8000	4:1	1.200	0.150	8.00	20	C

SUBMINIATURE PULSE TRANSFORMERS

1. Surface-mount and Plug-in construction.
2. Smallest possible size.
3. Units manufactured to MIL-T-21038 TP75SXNNNNK2.
4. Dielectric Strength: All units tested at 500VRMS.
5. Insulation Resistance: Greater than 10,000 megohms at 700VDC.
6. Operating Temperature: -55°C to +130° .
7. Terminals: 0.075" x 0.006" (lead dia 0.020" for Plug-in)
8. Thermal Shock: 25cycles, MIL-STD-202E, Test Method 107C, Condition A-1.



Electrical Characteristics:

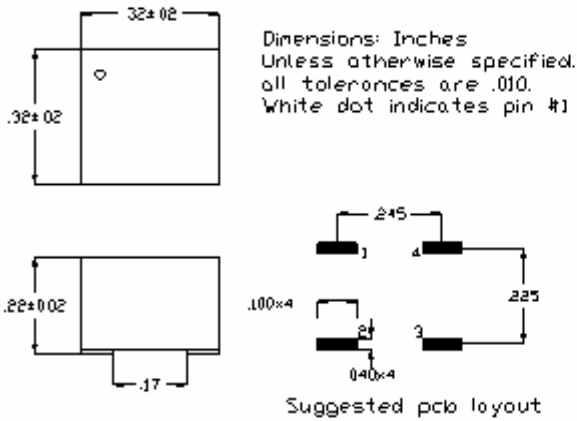
5T6174-XXX	E.T RATING (V x uSEC)	PRIMARY INDUCTANCE (uH)	TURNS RATIO	WINDING RESISTANCE (OHM)			LEAKAGE INDUCTANCE (uH)	I _{ex} (PEAK) AT RATED E.T	CONFIGURATION
				N1	N2	N3			
061	10	150	1:1:1	0.10	0.10	0.10	0.15	70	A
062	10	150	2:1:1	0.10	0.06	0.06	0.18	70	A
063	10	150	3:1:1	0.10	0.05	0.05	0.22	70	A
064	10	150	4:1:1	0.10	0.03	0.03	0.27	70	A
065	16	200	1:1:1	0.10	0.10	0.10	0.15	80	B
066	16	200	2:1:1	0.10	0.06	0.06	0.18	80	B
067	16	200	3:1:1	0.10	0.05	0.05	0.22	80	B
068	16	200	4:1:1	0.10	0.03	0.03	0.27	80	B
069	20	600	1:1:1	0.40	0.40	0.40	0.60	35	A
070	20	600	2:1:1	0.40	0.22	0.22	0.72	35	A
071	20	600	3:1:1	0.40	0.17	0.17	0.86	35	A
072	20	600	4:1:1	0.40	0.12	0.12	1.04	35	A
073	30	1300	1:1:1	0.80	0.80	0.80	1.30	25	A
074	30	1300	2:1:1	0.80	0.45	0.45	1.56	25	A
075	30	1300	3:1:1	0.80	0.35	0.35	1.88	25	A
076	30	1300	4:1:1	0.80	0.25	0.25	2.25	25	A
077	32	800	1:1:1	0.40	0.40	0.40	0.60	40	B
078	32	800	2:1:1	0.40	0.22	0.22	0.72	40	B
079	32	800	3:1:1	0.40	0.17	0.17	0.86	40	B
080	32	800	4:1:1	0.40	0.12	0.12	1.04	40	B
081	40	500	1:1:1	0.12	0.12	0.12	0.30	80	C
082	40	500	2:1:1	0.12	0.07	0.07	0.36	80	C
083	40	500	3:1:1	0.12	0.05	0.05	0.44	80	C
084	40	500	4:1:1	0.12	0.03	0.03	0.54	80	C
085	40	2200	1:1:1	1.40	1.40	1.40	2.20	20	A
086	40	2200	2:1:1	1.40	0.75	0.75	2.65	20	A
087	40	2200	3:1:1	1.40	0.60	0.60	3.20	20	A
088	40	2200	4:1:1	1.40	0.40	0.40	3.80	20	A
089	48	1700	1:1:1	0.80	0.80	0.80	1.30	30	B
090	48	1700	2:1:1	0.80	0.45	0.45	1.56	30	B
091	48	1700	3:1:1	0.80	0.35	0.35	1.88	30	B
092	48	1700	4:1:1	0.80	0.25	0.25	2.25	30	B
093	50	3500	1:1:1	2.20	2.20	2.20	3.50	15	A
094	50	3500	2:1:1	2.20	1.40	1.40	4.20	15	A
095	50	3500	3:1:1	2.20	1.10	1.10	5.00	15	A
096	50	3500	4:1:1	2.20	0.80	0.80	6.00	15	A
097	56	1000	1:1:1	0.24	0.24	0.24	0.60	56	C
098	56	1000	2:1:1	0.24	0.14	0.14	0.72	56	C
099	56	1000	3:1:1	0.24	0.10	0.10	0.88	56	C
100	56	1000	4:1:1	0.24	0.06	0.06	1.10	56	C
101	65	3000	1:1:1	1.40	1.40	1.40	2.20	22	B
102	65	3000	2:1:1	1.40	0.75	0.75	2.65	22	B
103	65	3000	3:1:1	1.40	0.60	0.60	3.20	22	B
104	65	3000	4:1:1	1.40	0.40	0.40	3.80	22	B
105	80	2000	1:1:1	0.48	0.48	0.48	1.20	40	C
106	80	2000	2:1:1	0.48	0.28	0.28	1.45	40	C
107	80	2000	3:1:1	0.48	0.20	0.20	1.75	40	C
108	80	2000	4:1:1	0.48	0.12	0.12	2.20	40	C
109	80	4500	1:1:1	2.20	2.20	2.20	3.50	18	B
110	80	4500	2:1:1	2.20	1.40	1.40	4.20	18	B
111	80	4500	3:1:1	2.20	1.10	1.10	5.00	18	B
112	80	4500	4:1:1	2.20	0.80	0.80	6.00	18	B
113	112	4000	1:1:1	0.96	0.96	0.96	2.40	28	C
114	112	4000	2:1:1	0.96	0.56	0.56	3.00	28	C
115	112	4000	3:1:1	0.96	0.40	0.40	3.50	28	C
116	112	4000	4:1:1	0.96	0.25	0.25	4.40	28	C
117	160	8000	1:1:1	2.00	2.00	2.00	4.80	20	C
118	160	8000	2:1:1	2.00	1.20	1.20	6.00	20	C
119	160	8000	3:1:1	2.00	0.80	0.80	7.00	20	C
120	160	8000	4:1:1	2.00	0.50	0.50	8.80	20	C

SUBMINIATURE PULSE TRANSFORMERS

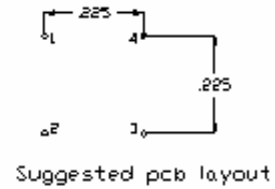
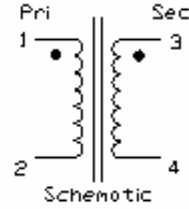
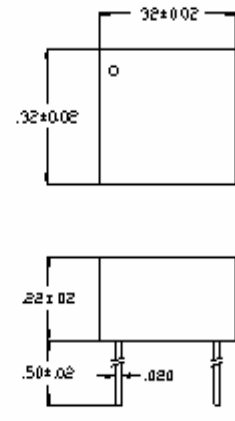
Mechanical Dimensions:

Configuration A:

A. Surface-mount construction



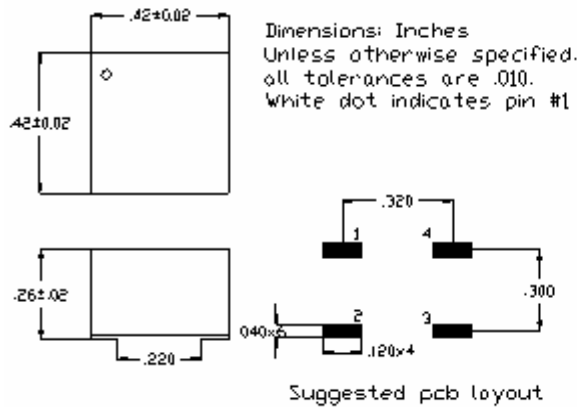
B. Plug-in construction



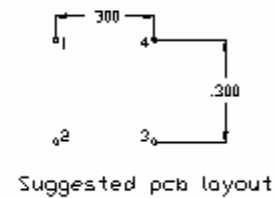
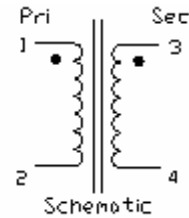
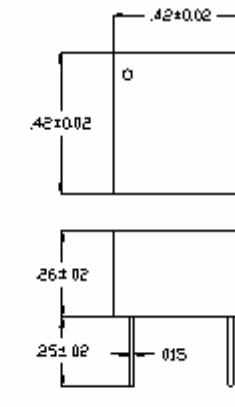
*Configuration: X noting use type--S=Surface-mount and P=Plug-in

Configuration B:

A. Surface-mount construction



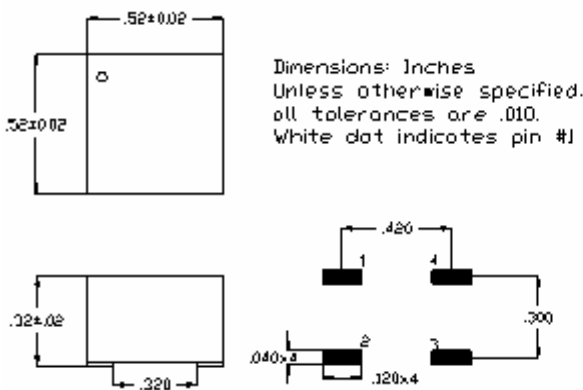
B. Plug-in construction



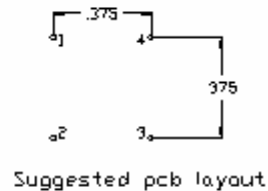
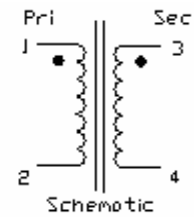
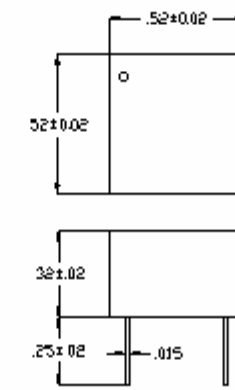
*Configuration: X noting use type--S=Surface-mount and P=Plug-in

Configuration C:

A. Surface-mount construction



B. Plug-in construction



*Configuration: X noting use type--S=Surface-mount and P=Plug-in