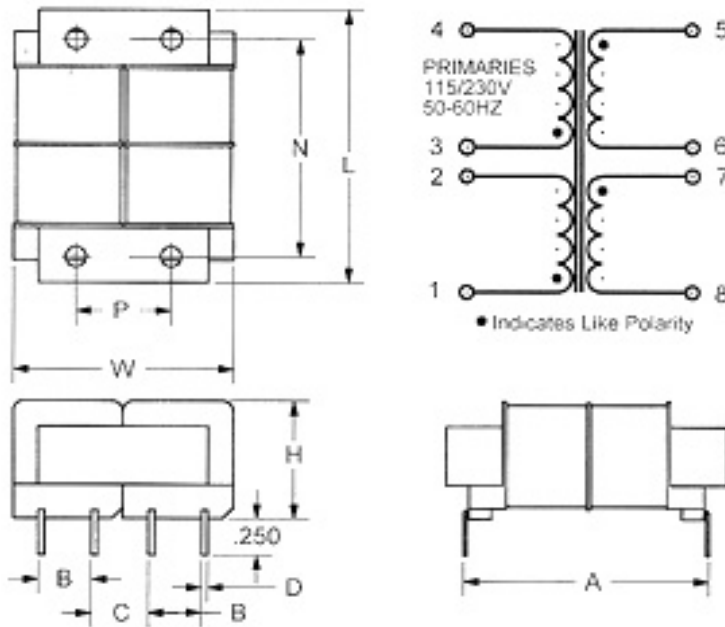


60Hz TRANSFORMERS (LOW PROFILE)

1. Power--2VA to 48VA.
2. Dielectric Strength--3,000VRMS Hipot.
3. Primaries--Dual Primaries (115/230V, 50-60Hz).
4. Secondaries--Series or Parallel Secondaries.
5. Electrostatic Shield--Not necessary, split bobbin construction.
6. Magnetic Field--Reduced magnetic radiation.
7. Height--0.65 to 1.40 inches.
8. Insulation--Class B insulation (130°C).



Mechanical dimensions:



VA	A	B	C	L	W	H	N	D	P	Wt. (oz.)
2	1.60	0.375	0.375	1.89	1.56	0.65	1.625	.041 X .020	0.88	5
6	1.60	0.375	0.375	1.89	1.56	0.85	1.625	.041 X .020	0.88	7
12	2.00	0.50	0.50	2.50	2.00	1.065	2.00	.041 X .020	1.00	11
24	1.90	0.60	0.58	2.87	2.25	1.25	2.44	.041sq	1.44	15
48	2.18	0.60	0.66	3.12	2.50	1.375	2.62	.041sq	1.38	21

Continued...

Electrical Characteristics:

PART NUMBER	VA (SIZE)	SECONDARY RMS RATING		PART NUMBER	VA (SIZE)	SECONDARY RMS RATING	
		SERIES	PARALLEL			SERIES	PARALLEL
5T6231-01	2	10VCT@250mA	5V@500mA	5T6231-28	12	30VCT@400mA	15V@800mA
5T6231-02	6	10VCT@600mA	5V@1.2A	5T6231-29	24	30VCT@800mA	15V@1.6A
5T6231-03	12	10VTC@1.2A	5V@2.4A	5T6231-30	48	30VCT@1.6A	15V@3.2A
5T6231-04	24	10VCT@2.4A	5V@4.8A	5T6231-31	2	34VCT@75mA	17V@150mA
5T6231-05	48	10VCT@4.8A	5V@9.6A	5T6231-32	6	34VCT@170mA	17V@340mA
5T6231-06	2	12.6VCT@200mA	6.3v@400mA	5T6231-33	12	34VCT@350mA	17V@700mA
5T6231-07	6	12.6VCT@450mA	6.3v@900mA	5T6231-34	24	34VCT@700mA	17V@1.4A
5T6231-08	12	12.6VCT@950mA	6.3V@1.9A	5T6231-35	48	34VCT@1.4A	17V@2.8A
5T6231-09	24	12.6VCT@1.9A	6.3V@3.8A	5T6231-36	2	40VCT@60mA	20V@120mA
5T6231-10	48	12.6VCT@3.8A	6.3V@7.6A	5T6231-37	6	40VCT@150mA	20V@300mA
5T6231-11	2	16VCT@150mA	8V@300mA	5T6231-38	12	40VCT@300mA	20V@600mA
5T6231-12	6	16VCT@350mA	8V@700mA	5T6231-39	24	40VCT@600mA	20V@1.2A
5T6231-13	12	16VCT@750mA	8V@1.5A	5T6231-40	48	40VCT@1.2A	20V@2.4A
5T6231-14	24	16VCT@1.5A	8V@3.0A	5T6231-41	2	56VCT@45mA	28V@90mA
5T6231-15	48	16VCT@3.0A	8V@6.0A	5T6231-42	6	56VCT@100mA	28V@200mA
5T6231-16	2	20VCT@125mA	10V@250mA	5T6231-43	12	56VCT@210mA	28V@420mA
5T6231-17	6	20VCT@300mA	10V@600mA	5T6231-44	24	56VCT@425mA	28V@850mA
5T6231-18	12	20VCT@600mA	10V@1.2A	5T6231-45	48	56VCT@850mA	28V@1.7A
5T6231-19	24	20VCT@1.2A	10V@2.4A	5T6231-46	2	88VCT@28mA	44V@56mA
5T6231-20	48	20VCT@2.4A	10V@4.8A	5T6231-47	6	88VCT@65mA	44V@130mA
5T6231-21	2	24VCT@100mA	12V@200mA	5T6231-48	12	88VCT@135mA	44V@270mA
5T6231-22	6	24VCT@250mA	12V@500mA	5T6231-49	2	120VCT@20mA	60V@40mA
5T6231-23	12	24VCT@500mA	12V@1.0A	5T6231-50	6	120VCT@50mA	60V@100mA
5T6231-24	24	24VCT@1.0A	12V@2.0A	5T6231-51	12	120VCT@100mA	60V@200mA
5T6231-25	48	24VCT@2.0A	12V@4.0A	5T6231-52	2	230VCT@10mA	115@20mA
5T6231-26	2	30VCT@85mA	15V@170mA	5T6231-53	6	230VCT@25mA	115@50mA
5T6231-27	6	30VCT@200mA	15V@400mA	5T6231-54	12	230VCT@50mA	115@100mA